

# Garage Price List 2018

East Inchmichael, Station Road, Errol, Perthshire, PH2 7SP Tel: 01821 642 713  
Visit: - [www.gilliesandmackay.com](http://www.gilliesandmackay.com) Email: - [info@gilliesandmackay.com](mailto:info@gilliesandmackay.com)



'Let's make the best Sheds In the world'

SINGLE GARAGE		GARAGE DOOR		TOTAL
Body Size	Price	2.4m (8')	3m (10')	(Inc VAT)
4.8m x 3m (16' x 10')	£4,520.00	£1650.00 A <b>£1425.00 M</b>		<b>£6,170.00 A</b> £5,945.00 M
4.8m x 3.6m (16' x 12')	£5,383.00		£1950.00 A <b>£1725.00 M</b>	<b>£7,333.00 A</b> £7,108.00 M
5.4m x 3m (18' x 10')	£5,160.00	£1650.00 A <b>£1425.00 M</b>		<b>£6,810.00 A</b> £6,585.00 M
5.4m x 3.6m (18' x 12')	£6,131.00		£1950.00 A <b>£1725.00 M</b>	<b>£8,081.00 A</b> £7,856.00 M
6m x 3m (20' x 10')	£5,700.00	£1650.00 A <b>£1425.00 M</b>		<b>£7,350.00 A</b> £7,125.00 M
6m x 4m (20' x 14')	£7,280.00		£1950.00 A <b>£1725.00 M</b>	<b>£9,230.00 A</b> £9,005.00 M
DOUBLE GARAGE		GARAGE DOOR		TOTAL
Body Size	Price	4.2m (14')		(Inc VAT)
6m x 5m (20' x 17')	£9,420.00	£2200.00 A <b>£1975.00 M</b>		<b>£11,620.00 A</b> £11,395.00 M
5.4m x 5.4m (18' x 18')	£9,150.00	£2200.00 A <b>£1975.00 M</b>		<b>£11,250.00 A</b> £11,175.00 M

Each garage comes with a **single mortise and tenon door** and 2 single glazed fixed pane **windows**. Double glazed option available.

**A** = Automatic, electric door (requires an electrician. Tayside Area: Andy Gallacher ☎ J I I F J I I G)  
**M** = Manual door

NB: Double Garages are only available with an Apex roof. Single Garages are available with both Apex and Pent roof.



'Let's make the best Sheds In the world'

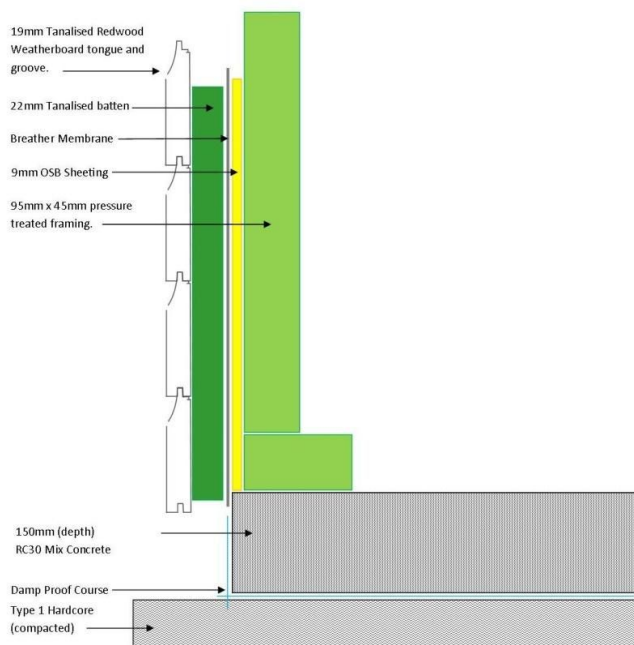
# 3 Tier Wall Specification

Wall Construction: -

- 19mm thick tongue and groove pressure treated weatherboard
- 22mm pressure treated batten (Cavity)
- Breather membrane
- 9mm OSB sheeting
- 95mm x 45mm pressure treated framing

Roof Construction: -

- 95mm x 45mm pressure treated framing [minimum size]
- 16mm tongue and groove sarking treated with Anti-Fungal wash
- 22mm pressure treated batten (Cavity)
- 0.5mm Polyester coated steel box profile sheeting [20 year guarantee]



*"Scotland is constantly battered by wet miserable weather. The horizontal driving rain is my most hated type, but we are a beautiful country nonetheless. This persistent rain has been the culprit of an unmanageable amount of water ingress to single skinned buildings, particularly those which span over 4 meters. Our new specification ensures your garage is bone dry on the inside and able to breathe on the outside. The perfect combination of excellence required to make your garage last a lifetime and beyond."*



'Let's make the best Sheds In the world'

# Ground Works

---

You will need a concrete plinth. It will need to be made to our requirements. Our garages weigh a ton (and then some) so if your base is rubbish it'll ruin the whole thing. These concrete plinths need to be spot on. Level, in square and to size. All the plans are downloadable from the website at: [www.gilliesandmackay.com/garages](http://www.gilliesandmackay.com/garages)  
Alternatively, just give us a call or pop in and we'll print you them off.

# Good to Know

---

All prices include VAT, Delivery and Assembly within 30 mile radius of Errol. Out-with the 30 miles there is a £3.75 charge per mile. The same is applicable to the Garage Doors also.

All the Garages are constructed in pressure treated timbers, including the external weatherboard. We do apply one coat of Sadolin to the weatherboard prior to it leaving the workshop. We do recommend that you apply a second coat after assembly. It is important to remember that the weatherboard is pressure treated, therefore it's natural colour is a light green and will be visible through the first coat we do.

Our Ironmongery is triple galvanised and all our buildings are washed with an anti-fungal treatment.

Gillies and Mackay buildings are built to last a lifetime. Our promise is that you will only ever need to by one G&M in your lifetime. We have a [Buyers Prep Guide](#) and a [Buyers Aftercare](#) to help you make the best buying decision for you.

Terms of Sale available on Order or Request.



'Let's make the best Sheds In the world'

